



## IP PTZ Pro Darkwarrior AM-K7255-R4U44-FSR 4K Panoramic 8MP Ultra Low 0.0004lux 180° PTZ Camera



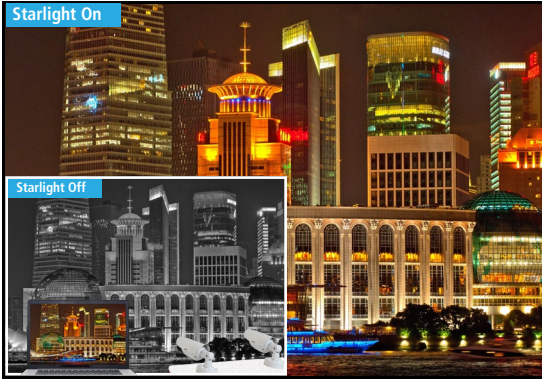
Superior Engineering Design & Sensational Image Quality

## AM-K7255-R8U44-FSR 4K Panoramic Ultra Low 0.0004lux 360° PTZ Camera

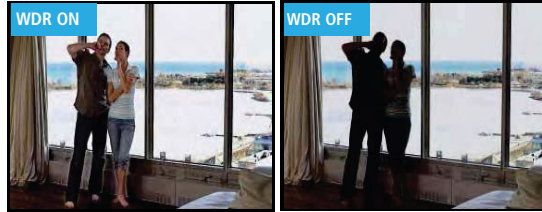
### Features :

- 1/1.8" Super High Low lux progressive scan CMOS image sensor
- Ultra HD 16MP by dual 4096(H) x 1800(V) resolution at 25FPS real time
- Supports Panoramic target tracking, Auto-tracking, Multiple target tracking,
- Panoramic 3D positioning, Advanced alert alarming and many more
- Dual Concept of IVA functions Panoramic and PTZ Advanced IVA
- Latest H.265+ Hardware compression, Along with H.264(HP/MP/BP)/MJPEG
- Built in Advanced iVA(Intelligent Video Analysis) functions like Facedetection/People counting/on duty/audio & video Abnormal detection/Tripwire/Double Tripwire
- Advanced Dual IR Technology by infrared (IR) and white LED Works the camera to take either black/white or color videos at night Start by the Configuring the Motion Activation
- Unique design with Fixed camera with Integrated 44X Optical Zoom PTZ function to monitor 360°/180° and it supported with auto tracking and panoramic tracking function
- ANR(Automatic Network Replenishment) to support Offline network Storage
- data(SD Card/USB) videos automatically download to NVR Hard Drive when network re-established
- Superior true night vision by IR LASER technology up to 800M and White flash Light covered up 50M
- Camera installed with Built-In WiFi controller reach up to 200M long distance(Open area)
- Supported upto built in 1G Lanport, Audio In/Out, Alarm Integration, BNC Video Out and RS 485 Comm.
- PTZ Camera supports 704X Zooming capacity by 44X Optical zoom and 16X Digital zoom
- Triple streaming, Triple compression, Super high 140dB WDR, 3D DNR
- Software Compatibility iCRYs Series 256CH CMS Software & 150CH on Single Screen Viewing
- Supported Offline Storage by Micro SD/SDHC/SDXC Card slot(upto 128G), 1CH Audio in/out (G.711/AAC)
- Wide Range Network Protocol TCP IPv4/IPv6/HTTP/802.1x/FTP/SNMP/UPnP/SNMP/DNS/RTSP & Many More
- Third Party System Activation Control by 8CH Alarm in/ 2CH Alarm Out Latest ONVIF S profile compliance, Email notification, Manual & Schedule Snapshot
- Easy, fast response & friendly graphical user interface, Advanced encryption secure access
- Built in Transient Voltage Suppression up to 6000v & lightning/surge protection power(2000v) and RJ45(1000v)

## Darkwarrior Starlight IP Camera Night Vision



## Super WDR



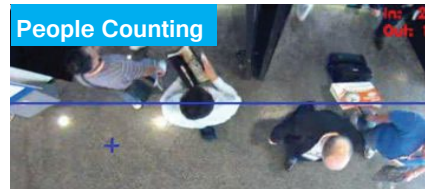
# Intelligent Video Analytic Functions :



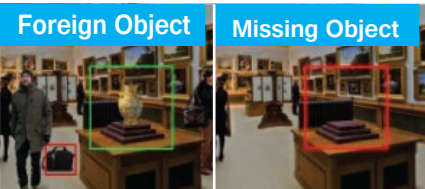
**Double Trip Wire**  
The application detects moving objects that cross a two trip line, making it possible to automatically trigger an event. Ideal for illegal turn or traffic flow (vehicles or people) and specify the minimum to maximum time intervals or when the person or an object enters in unauthorized zone and crosses, the both virtual lines trigger an event.



**Facial Detection**  
The application is able to identify and capture human faces from live video & it can save the images to the specified Recording Path either in NVR or CMS or Local Computer with Date & Time Stamp. Ideal for ATM windows, Service and Ticket Counters, Retail POS counters, Doorways and Passageways, Lobby and Reception areas.



**People Counting**  
The application sense people from an overhead position in the desired areas, how many persons Enter & Exit passing through. Functional to maintain Visitor Data, supervise stock point, evaluate traffic in key areas & manage the traffic flows. Ideal for Customer Service Centers, Airports, Changing Rooms, Point-of-Sale (POS) transactions Desk.



**Foreign Object**  
Foreign: The application Detects object abandoned/left behind/Suspicious Objects Left in Pre-defined Area. It triggers an event. Ideal for Public Transports, Museums, Art Galleries & Public Places  
**Missing** : The application detects when a particular object was moved or removed from the desired drawn Virtual area, it trigger an event. Ideal for Museums, Warehouse, Art Gallery, Jewelry showroom.



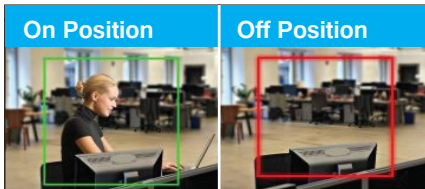
**Crowd**  
The application estimates the density of people in pre-defined area, once the density crosses a certain limits or suddenly group of a people enter into in the pre-defined area, it triggers an event. Ideal for Retailers, Shopping Malls, Waiting Areas, Hospitals, Parking Zones, Silent Zones.



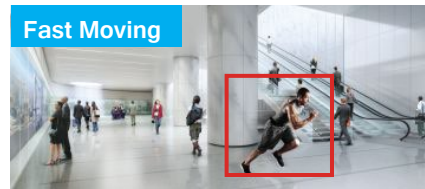
**Loitering**  
If somebody enters the marked area and stays there for a certain period of time, the alarm is automatically triggered. Ideal for Public areas, Border Fences, Buildings, Government Restricted Zone, Banks, Parking Areas.



**Parking**  
The application detects illegal parking with pre-defined restricted zones, speed limit settings.  
Ideal for VIP parking Zone, No Parking Zone, Special Allocated Parking Zone, Parliament House.



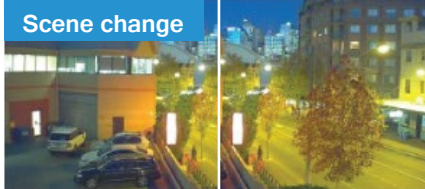
**On Position**  
The application triggers an alarm when the Duty Officers are absence from their pre-defined sitting positions.  
**Off Position**  
Ideal for Reception, Customer Service Desk, POS Desk, Entry/Exits Security Guards Cabin.



**Fast Moving**  
The application triggers an alarm when the person runs in a not allowing Running pre-defined Zone.  
Ideal for Temple, Hallways lobbies, Platforms Walking Zone, Airports Runways.



**Blur image**  
The application trigger an alarm if someone deliberately or accidentally disturbed the lens focus or change the image Sharpness.



**Scene change**  
The application trigger an alarm if the camera Rotated/Manipulation/Direction Shifted from the user-selected Viewing direction or camera lens is covered by some bag or cloths, Spray Painting, Video Tamper.

More than  
**18 IVA Functions**  
are available



## Technical Specifications

Model No	AM-K7255-R8U44-FSR
<b>Tracking Function</b>	
Smart Tracking	Auto, Manual, Mixed, Panoramic, IVA
Multiple target	30 detection, target sensitivity adjustable, Target switch time<1s
Panoramic target tracking	PTZ Auto tracking on target via set rules, Click to switch on different target and continue tracking
Panoramic 3D Positioning	Yes
Tracking time	Adjustable
Panoramic IVA	Area Intrusion, cross line, enter, leaving, Heat Map
PTZ Camera IVA	Tripwire, Double Tripwire, Perimeter, Object Left & Lost, Running, Loitering, Parking, Crowd, Audio & Video Abnormal detection, n duty detection, Scene change, Blur image, Face detection, People counting, Early Warning O
Advanced Warning	Laser, White light, Speaker, Autotracking, IVA activate
Activate PTZ	Yes
Dual IR LED	White LED, Laser
Laser	808nm Laser, >20,000hours, Full angle and adjustable, Auto match with zooming
IR distance	Laser light 800Mtrs., White IR LED 50Mtrs., ICR
<b>Panoramic Camera</b>	
Sensor type	1/1.8" progressive scan CMOS image sensor
Shutter Speed Control	Auto/Manual 1/1s-1/100,000s
Effective Pixels	4096(H) x 1800(V) x 2
Lux Level(illumination)	Color 0.0008lux, B/W 0.0001lux at F2.2, AGC on, 0lux at IR On
Video compression	H.265+, H.265, H.264, MJPEG, H.264 Main/High/Baseline profile
Main stream	25fps at 50Hz 4096x1800,3840x1680,2720x1192, 30fps at 60Hz 4096x1800,3840x1680,2720x1192
Sub stream	25fps at 704x320(50Hz), 30fps at 704x320(60Hz)
Third stream	25fps at 1280x560(50Hz), 30fps at 1280x560(60Hz)
Lens	5mm
View angle	Horizontal 360°
3D DNR	Yes
HLC	Yes
Image control	EIS, Defog, BLC, ROI 7 Dynamic Areas for Both Main and Sub Stream
<b>PTZ Camera</b>	
Sensor type	1/1.8" progressive scan CMOS image sensor
Shutter Speed Control	Auto/Manual 1/1s-1/100,000s
Effective Pixels	1920 x 1080
Lux Level(illumination)	Color 0.0008lux, B/W 0.0001lux at F2.2, AGC on, 0lux at IR On
Video compression	H.265+, H.265, H.264, MJPEG, H.264 Main/High/Baseline profile
Main stream	50fps at 50Hz 1920x1080,1280x960,1280x720, 30fps at 60Hz 1920x1080,1280x960,1280x720
Sub stream	25fps at 50Hz 704x320,352x288,176x144, 30fps at 60Hz 704x320,352x288,176x144
Third stream	25fps at 50Hz 1920x1080,1280x960,1280x720,704x576,352x288, 30fps at 60Hz1920x1080,1280x960,1280x720,704x576,352x288
Lens	F = 6mm ~ 264mm
Optical zoom ratio	44X optical, 16X digital
Angle of view	Horizontal : 61.2°(wide) ~ 2°(tele)
Aperture range	F1.5 ~ F4.8
Zooming speed	Approx. 5s
Bit Rate	32Kbps ~ 16Mbps adjustable @ Main, Second, Third Stream
WDR	140dB, Auto/Manual adjustable(PTZ Cameras)
Day/Night	Auto(Outside/Inside), Color, B/W
Digital Noise Reduction	3DNR (Close/Ordinary/Expert)

## Technical Specifications

Model No.	AM-K7255-R8U44-FSR
Light Compensation	BLC Off/On, 1 Area, Customize Design, HLC Off/On Adjustable
White Balance	Auto/Manual/Lock/Nature/Sunshine/Day Light/Warm Light
Other function	Smart Defog Control, EIS(Image Stabilizer), Flip control
Motion Detection	Yes, Zones :396(22x18), Sensitivity Level 1~ 100
Privacy Masking	On/Off (Max.4 Areas)
Image Control	Brightness, Contrast, Sharpness, Saturation
OSD Display	16×16,32×32,24×24,48×48,64×64 Character Size 5 Area Arrangement @ Time/Date/Week/Character/PTZ Angle
Audio Compression	G.711alaw/G.711ulaw/G.722/G.726/MP2L2/AAC/PCM
<b>Pan/Tilt/Alarm</b>	
Pan/Tilt range	Pan 360°(Endless) / Tilt -16° ~ 90°(auto flip)
Pan speed	Manual 0.1°-200°/sec, Preset speed: 200°/s
Tilt speed	Manual : 0.1°-200°/s, Preset speed: 200°/s
Preset accuracy	±0.02°
Preset	500 Preset
Patterns	8nos, each with 600s memory or 300 orders
Cruise	8,nos Up to 32 presets per cruise
Scan	8 Setup
OSD function	Various languages, Camera & Video parameter
Special function	3D Positioning, Power off memory
Home guard function	Link @ preset/ scan/ cruise/ pattern
Protocol	PTZ_PELCO_D/P, DOME_PELCO_D/P
Other function	N.A
<b>Software Support</b>	
Onvif	YES, Profile S
CMS software	iCRYST Series, up to 256CH(IP+NVR+Matrix)
3rd Party VMS/NVR /CMS	SDK, ONVIF, CGI
User Login	8 User / 4 level of Rights
Simultaneous User Login	5 User Client
Snap Shot Management	Schedule, Link with FTP or Email
Browser Support	Chrome8+, Firefox3.5+, IE8 and above
Encryption	Off/AES
<b>Network, Storage, Interface</b>	
Protocol	HTTP,802.1x,FTP,SMTP,UPnP,SNMP,DNS,DDNS,PPPoE,NTP,RTSP,TCP,UDP,DHCP
Storage	Micro SD/SDHC/SDXC slot(256Gb)
Pre & Post recording	Pre : 5 to 15sec, Post : 10 to 60 sec
Storage function	ANR(auto download in NVR), Manual & Alarm recording
Network storage	FTP(pre & post upload)
LAN port	1x Port RJ-45, 10M/100M/1000M ethernet
Wi-Fi	Yes
GPS	Yes
Audio	1Ch Mic in/Line in, 1 Ch Out
Alarm	8Ch input & 2Choutput
Video output	1.0Vp-p / 75Ω, NTSC or PAL Composite video
Other ports	N.A

## Technical Specifications

**Model No.** AM-K7255-R8U44-FSR

### General

Power supply	AC24V
Power consumption	109W Max.
Voltage protection	TVS 6000V, Lightning/Surge GB/T17626.5 Class 4
Language	English, Spanish, Korean, Italian, Russian, Chinese, etc.
IP & Vandal protection	IP66
Operating temp. & humidity	-40°C ~ 70°C & 0% ~ 95% RH
Enclosure	Metal housing, with IP66 protection.
Weight (g) & Dimension	<26Kg camera, 372mm x 360mm(D)
Mounting bracket	Wall, Pendant, Pole, Corner mount(optional)

### Dimension :

